



SECAT

THORPEDENE PRIMARY SCHOOL & NURSERY

📍 Delaware Road, Shoeburyness, Essex, SS3 9NP ☎ 01702 582 225
🌐 www.thorpedene.secat.co.uk ✉ office@thorpedene.secat.co.uk

Headteacher: Mrs Stephanie Frost

5th February 2025

Dear Parents and Carers,

Re: Ofsted Inspection Report

As you are aware our school had a full Section 5 Ofsted Inspection earlier this term on the 7th and 8th January. The inspection was carried out in line with the new “Education Inspection Framework” and was the first inspection since 2019.

A copy of the final report is attached to this letter and can also be found on our school website and the Ofsted website, and we encourage you to read it.

We would like to thank everyone involved in the inspection for their contributions, including the children who were a credit to the school in everything they did and said, Parents who made their views clear through the online Parent View survey and the whole staff team for their hard work and continuing efforts.

As the inspectors rightly point out, **“Pupils really enjoy coming to school. They like playing with their friends and they look forward to their lessons”** and **“Pupils at Thorpedene Primary School are very well cared for. Relationships between staff and pupils are caring and kind.”**

As school leaders, we believe the report rightly identifies both the strengths of the school and the areas that we need to continue to improve. The inspectors agreed that our self-evaluation of the school was accurate and that our school improvement plans were already focussed on the recommended areas, commenting that: **“Leaders, including Trustees and Governors, have a secure understanding of the school’s priorities. They have improved behaviour and attendance and remain committed to further improvements.”**

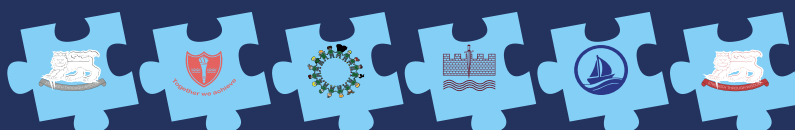
The inspectors positively comment on many of the strengths of our school:

“The school has embedded a broad curriculum that prepares pupils well for their next stage of education” and

“The school has made significant progress in supporting pupils with special educational needs and/or disabilities (SEND). Staff provide high levels of care and emotional support.”

“Pupils often display positive attitudes towards their learning. They are settled and calm in lessons and eager to learn. The school is ambitious that pupils have the right opportunities to succeed.”

BUILDING STRONG SCHOOLS • BUILDING STRONG PARTNERSHIPS • BUILDING STRONG COMMUNITIES



However, the inspection team also agree with our own evaluation that our assessment and feedback process is not yet rigorous and consistent enough in some areas and found that in some lessons, Teachers do not provide clear and regular feedback to address misunderstandings. We are also continuing to develop staff knowledge and understanding of identifying and supporting children with SEND needs across the school, as you will know this has been a key area over the last year that we are improving further. Early Reading remains a priority for us and our phonics programme has been reviewed and we continue to work with the Department for Education English Hub who continue to provide bespoke support in further engaging our children in reading both in school and at home. Our Early Years curriculum is being redesigned to ensure that it includes extra detail so we can ensure we continue to support the children's development fully.

It is worth recognising that as the report shows our school's strengths and has highlighted key areas for improvement, as school leaders we had already identified these. I have attached a summary of our School Improvement Plan that was set in September 2024 where you can clearly see our priority areas are in line with the Ofsted report findings. Many of you will be aware that there were significant staff changes last academic year and we now have a full complement of staff across the school including the Senior Leadership Team. We continue to work with external agencies and SECAT Trust wide staff with specialism in Early Years and SEND to make further improvements.

At this time, we ask for your continued support as we continue to work with pace to bring about the necessary change and continue to build upon the improvements that have already been made.

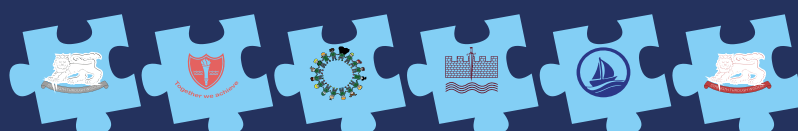
As always, if you have any questions or concerns, or wish to discuss any aspect of this letter or the report, please do get in touch with us and we can direct you to the right member of staff to discuss any matters further.

Yours sincerely,



Mrs Stephanie Frost
Headteacher

BUILDING STRONG SCHOOLS • BUILDING STRONG PARTNERSHIPS • BUILDING STRONG COMMUNITIES



SECAT

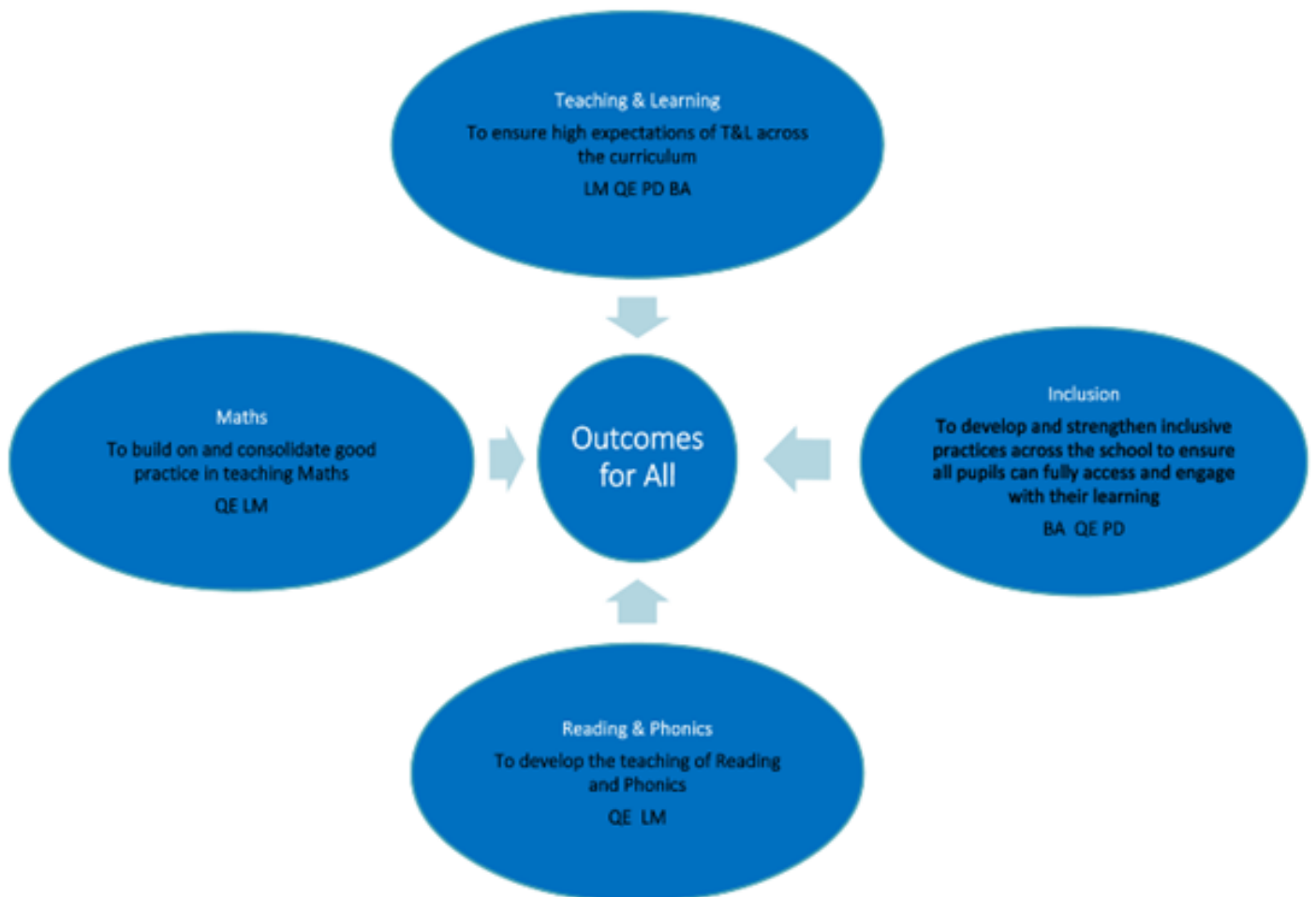


THORPEDENE PRIMARY SCHOOL & NURSERY

📍 Delaware Road, Shoeburyness, Essex, SS3 9NP ☎ 01702 582 225
🌐 www.thorpedene.secat.co.uk ✉ office@thorpedene.secat.co.uk

Headteacher: Mrs Stephanie Frost

Thorpedene Primary School & Nursery School Improvement Plan Overview 2024-2025



BUILDING STRONG SCHOOLS • BUILDING STRONG PARTNERSHIPS • BUILDING STRONG COMMUNITIES

